

Howto: Installation of System Center Operations Manager 2012

Introduction

The How-to contains information to help you deploy System Center Operations Manager 2012. In System Center Operations Manager 2012, the first feature that is installed is the management server. The operational database and data warehouse database are created during this setup. This procedure assumes that you have already installed Microsoft SQL Server 2008 SP1 or Microsoft SQL Server 2008 R2 locally on the same server that you are going to install the first management server. However, you can specify an instance of SQL Server that is installed on a separate server.

You must ensure that your server meets the minimum supported configurations for Operations Manager 2012. For more information, see [Operations Manager 2012 Supported Configurations](#).

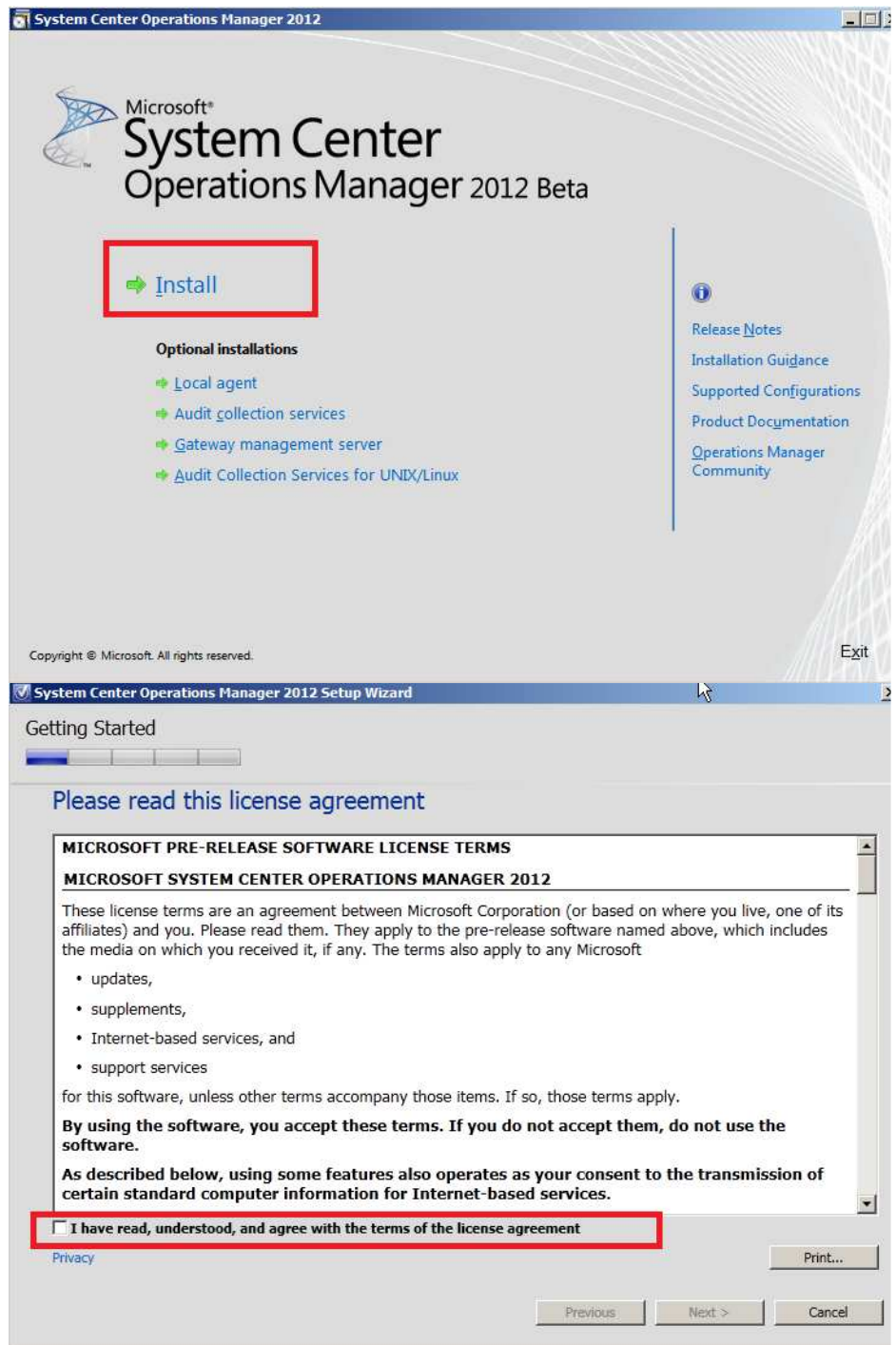
Enjoy reading this howto! Leave comments if you want to some I can improve this howto.

Author: Guido van Brakel

Date created: 22/07/2011

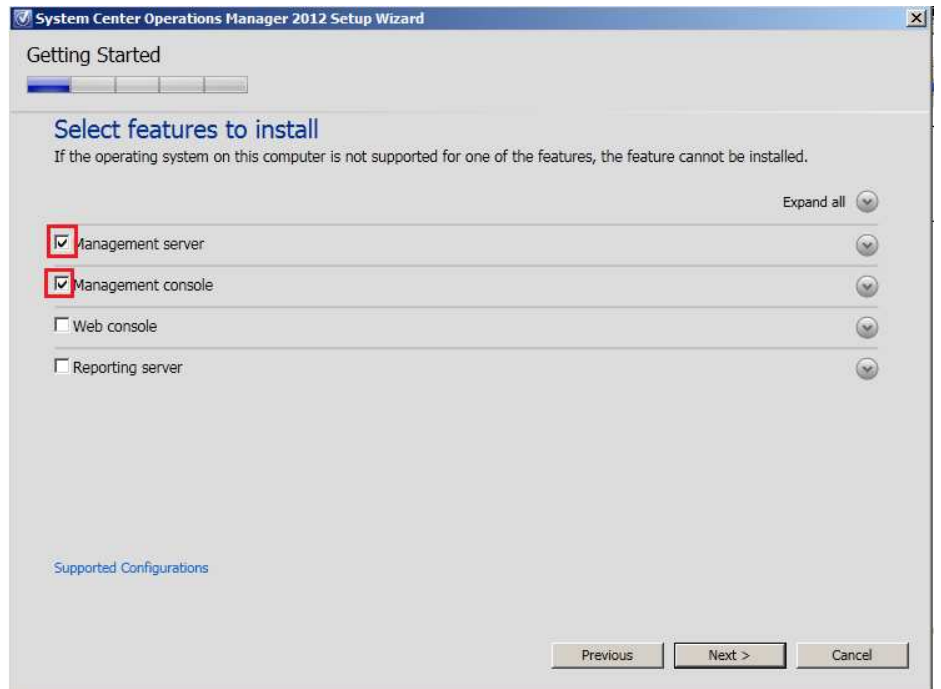
Website: <http://www.enduria.eu>

- Here we click install and the installation procedure will start.

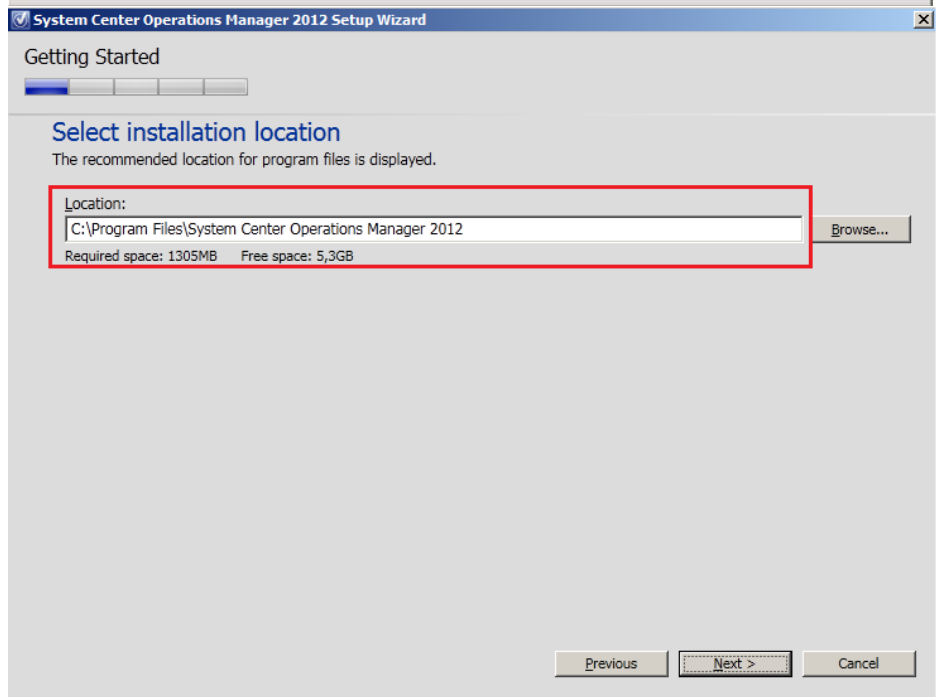


- Here we accept the license agreement followed by clicking Next

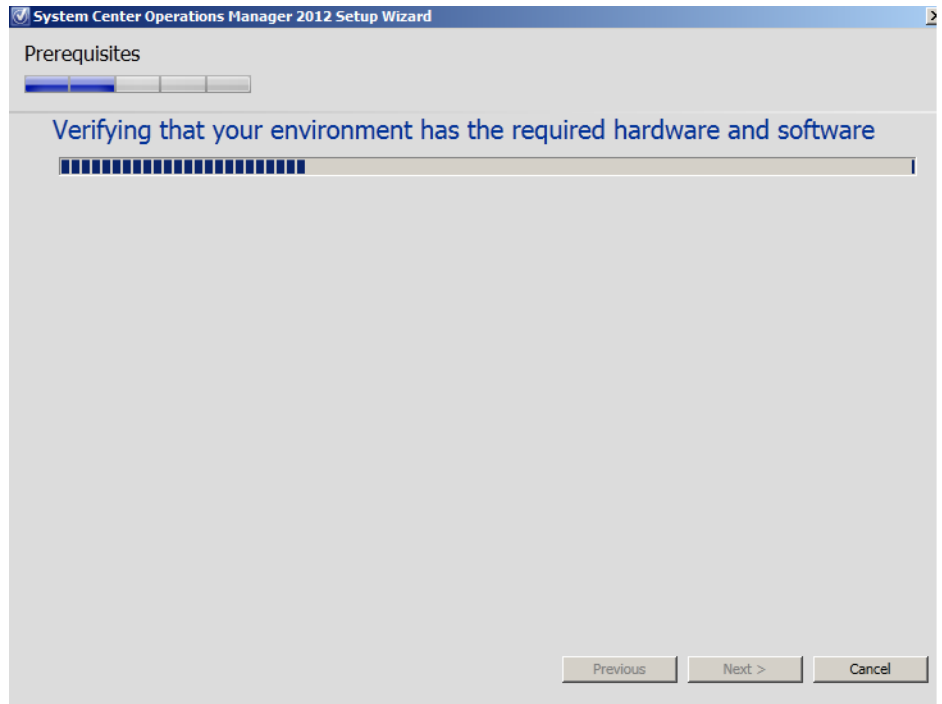
- I choose here to install the Management Server (RMS), this will include the datawarehouse, and the console to be able to manage System Center Operations Manager 2012



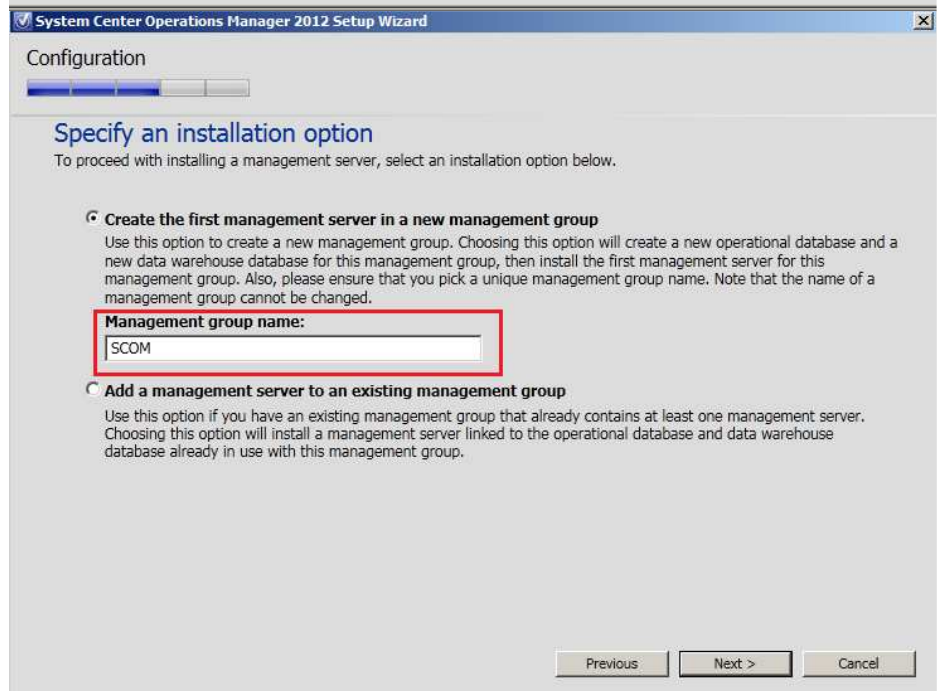
- Specify the location where System Center Operations Manager 2012 will be installed. I choose the default location. Then click Next.



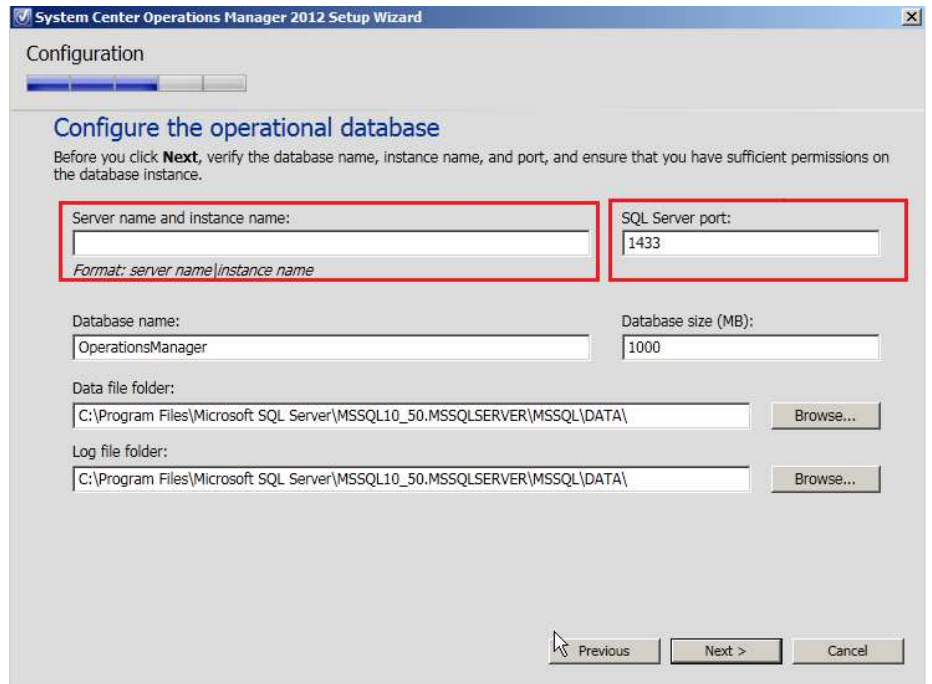
- Now the setup is verifying your environment to see if you have all the prerequisites installed and if your configuration meets the minimum requirements.



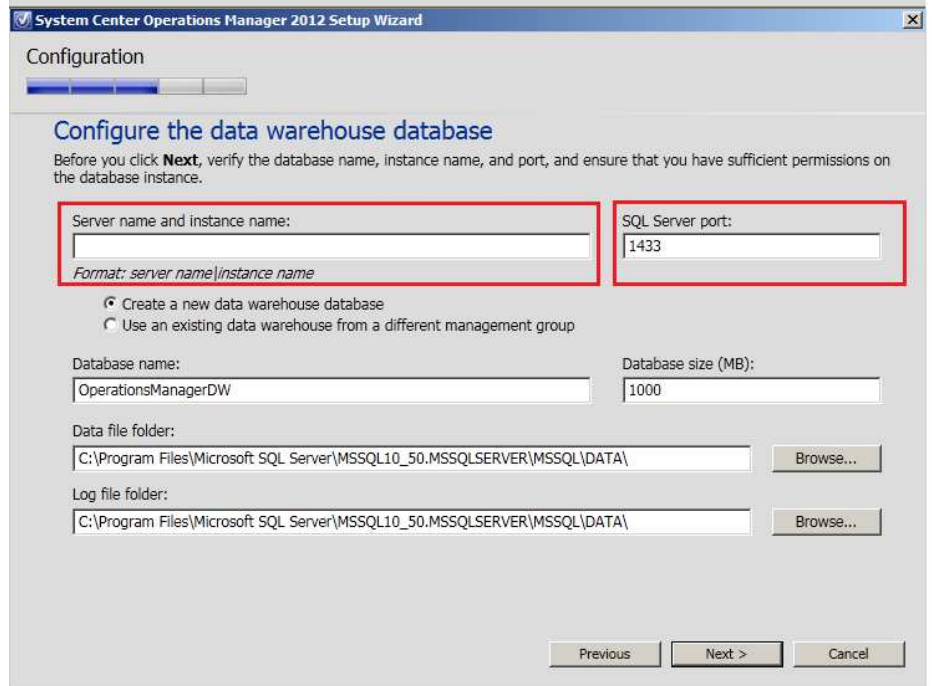
- Specify the management group name, and then click Next



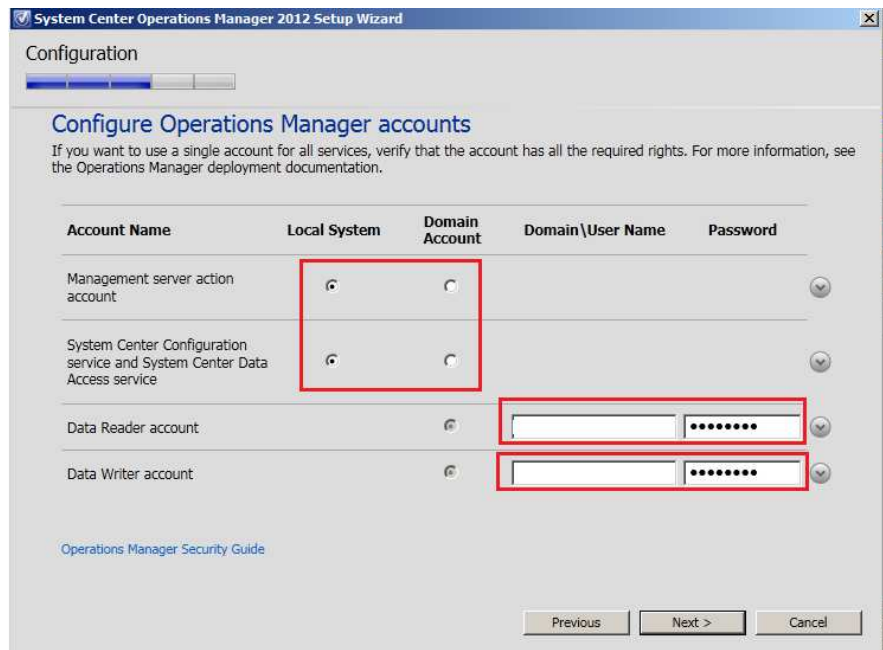
- When the 'Configure the operational database' page opens, enter the name (server and instance) for the database server that will host the operational database. Also enter the SQL server port. After you type the correct value for the SQL Server database server name, click the SQL Server port box so that Setup will attempt to validate the values you typed for the SQL Server name and for the port number. In the Database name, Database size (MB) Data file folder, and Log file folder boxes, I recommend that you accept the default values. Click Next.



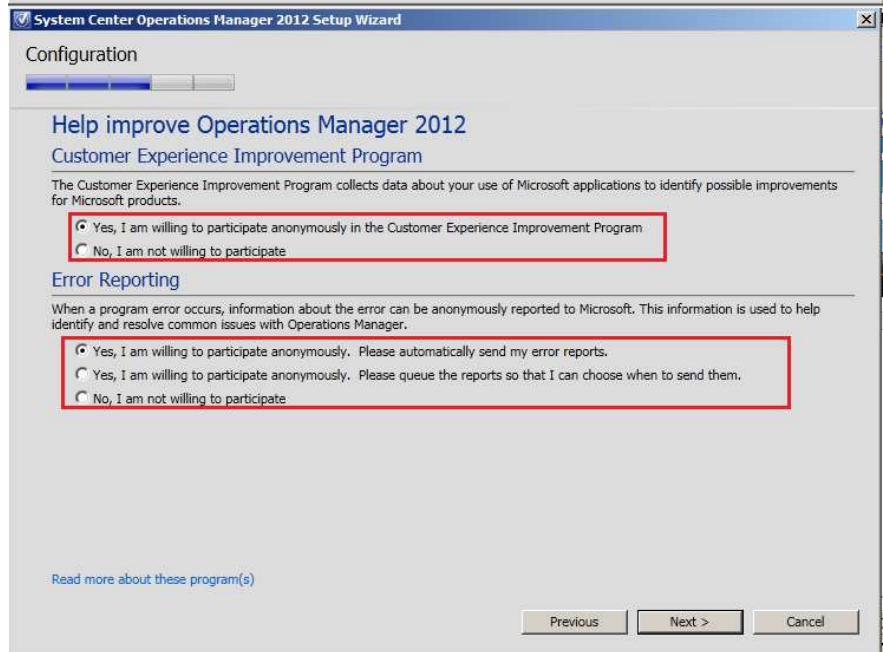
- When the 'Configure the data warehouse database' page opens, enter the name of the SQL Server instance for the database server that will host the data warehouse database. You can use the default values for the other fields. Click Next.



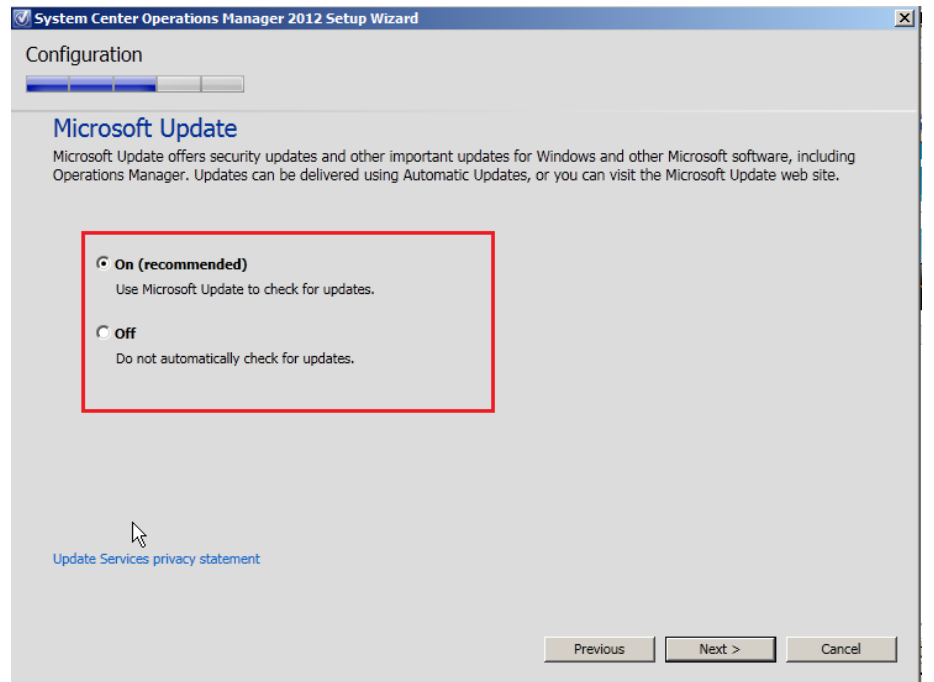
- On 'Configure Operations Manager accounts' page, I recommend that you use the Domain Account option for the Management Server action account, the System Center Configuration service and System Center Data Access service account, the Data Reader account, and the Data Writer account. None of them should have domain administrator credentials. Click Next.



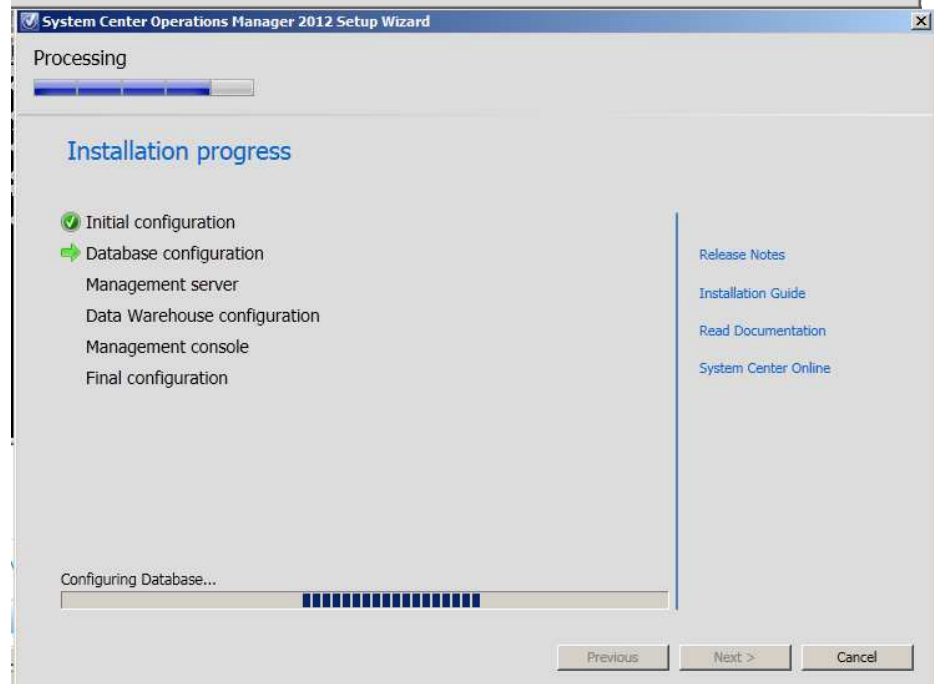
- On the 'Help improve Operations Manager 2012' page, select your options, and then click Next.



- If Windows Update is not enabled on the computer, the Configuration, Microsoft Update page appears. Select your options, and then click Next.



- Now the installation will start. You have to wait until it is finished.



This is the end of this Howto.